

SWEEPER BROOM QUICK START GUIDE



This Auger Torque quick start guide will enable you to get your new product up and running in no time. The complete operators manual is available on the Auger Torque website. To download a copy in pdf format, simply scan the QR code or visit www.augertorque.com.

99-95515004 - ISSUE 1-0

ENGLISH

For warranty purposes this product MUST be registered with Auger Torque within 14 days of purchase by the end user.



FITTING THE SWEEPER UNIT

Refer to the parent machine operators manual for attaching accessories.

Fit Sweeper to parent machine arms and lock in place.

Locate the flow and return hydraulic pipes on the Sweeper Unit.

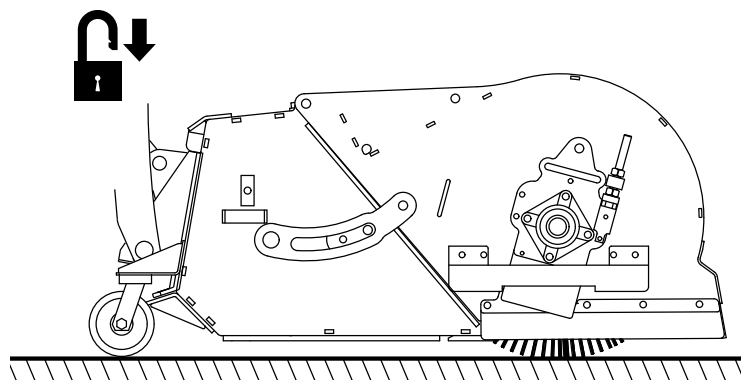
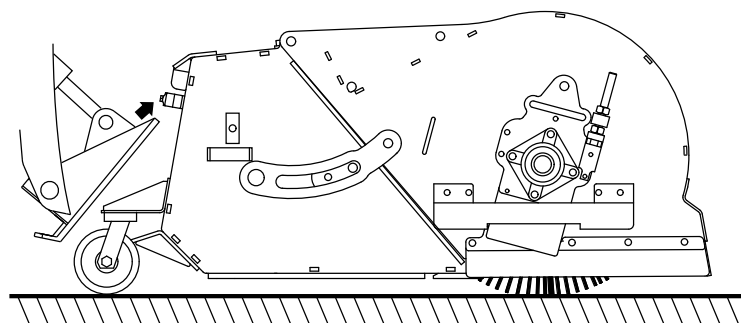
Connect hydraulic pipes to parent machine

Connect quick release couplers (if fitted).

2) Slot the top of the parent machine frame under the top edge of the Mounting Frame or Locating Hooks (refer to parent machine operator's manual).

3) Swing the parent machine frame to the vertical position.

Following the parent machine operator's manual, ensure that the Mounting Frame is securely locked in place.

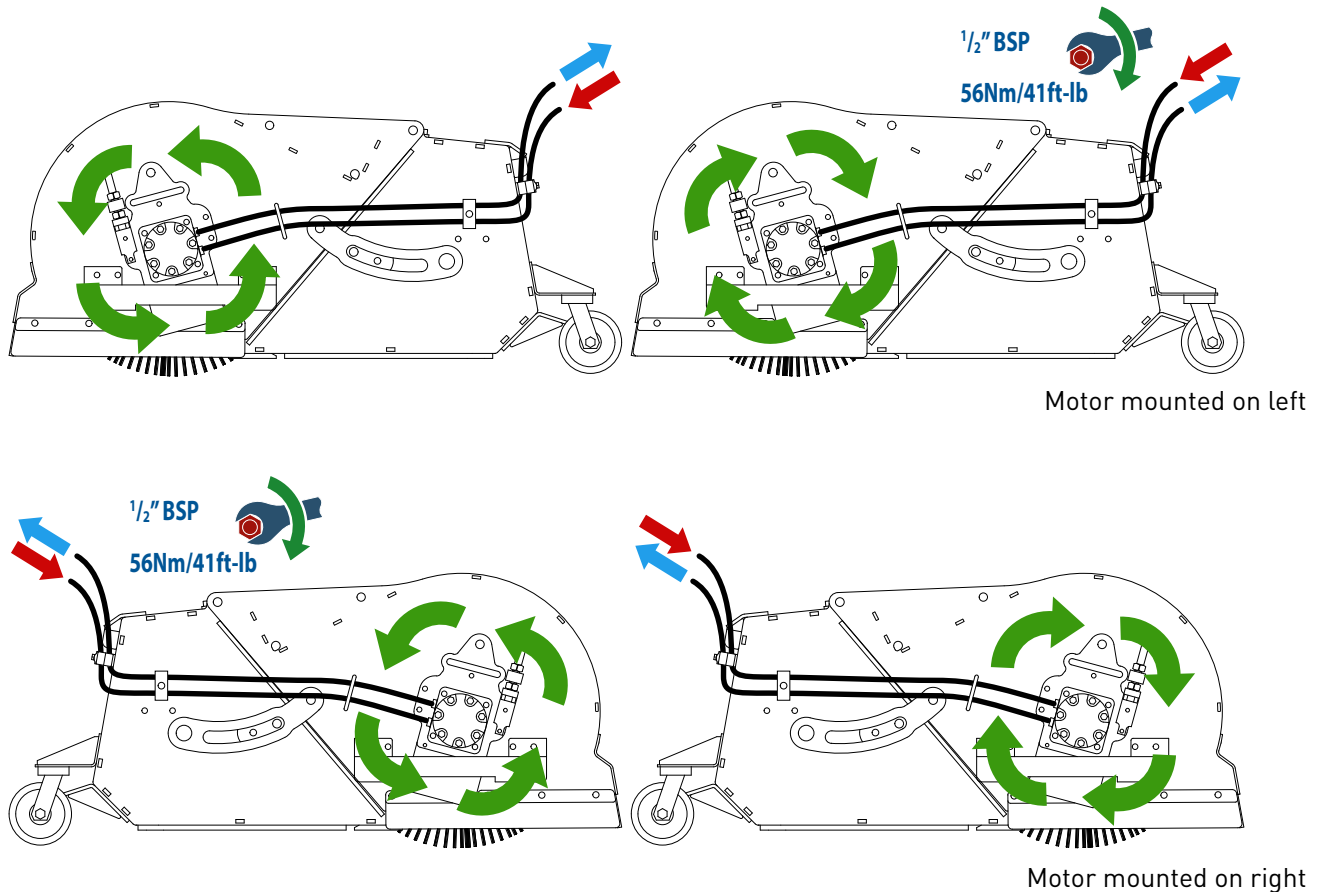


HYDRAULIC CONNECTIONS

All Auger Torque Sweeper Units require a 'flow' and 'return' of hydraulic fluid from the parent machine's auxiliary hydraulic power supply to operate. All Sweepers are reversible and require the host machine to be fitted with a two way flow auxiliary circuit. Check with the parent machine dealer for advice.

When fitting hydraulic hoses, ensure that they are tightened to the correct torque for the hose fittings.

Some models of Sweeper are supplied with hydraulic quick release couplers, which are required for connection to the parent machine.



The parent machine auxiliary hydraulic connections are normally located near the end of the loader arms. The motor and bearing assemblies on the Sweeper unit can be changed over from right to left so that the motor hoses are positioned near the auxiliary hydraulic connections on the parent machine (see operators manual for full instructions).

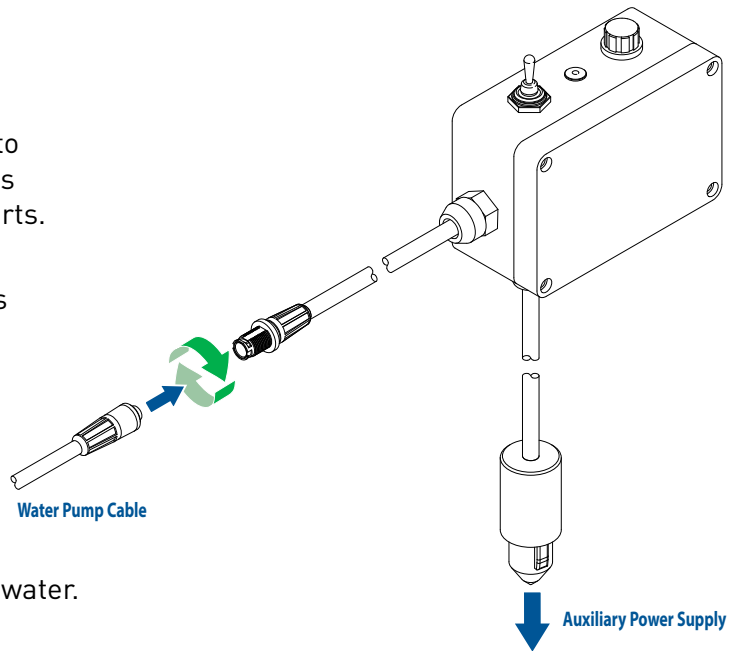
Ensure that the hydraulic pipes are of sufficient length to allow the sweeper to move freely during work.

It is critical that the supply of oil is within the stated limits for the particular Sweeper unit. Check that the rated flow (l/min - gal/min) & pressure (Bar - PSI) of your machine does not exceed the limits shown on the serial plate.

DUST SUPPRESSION SYSTEM

Control Box

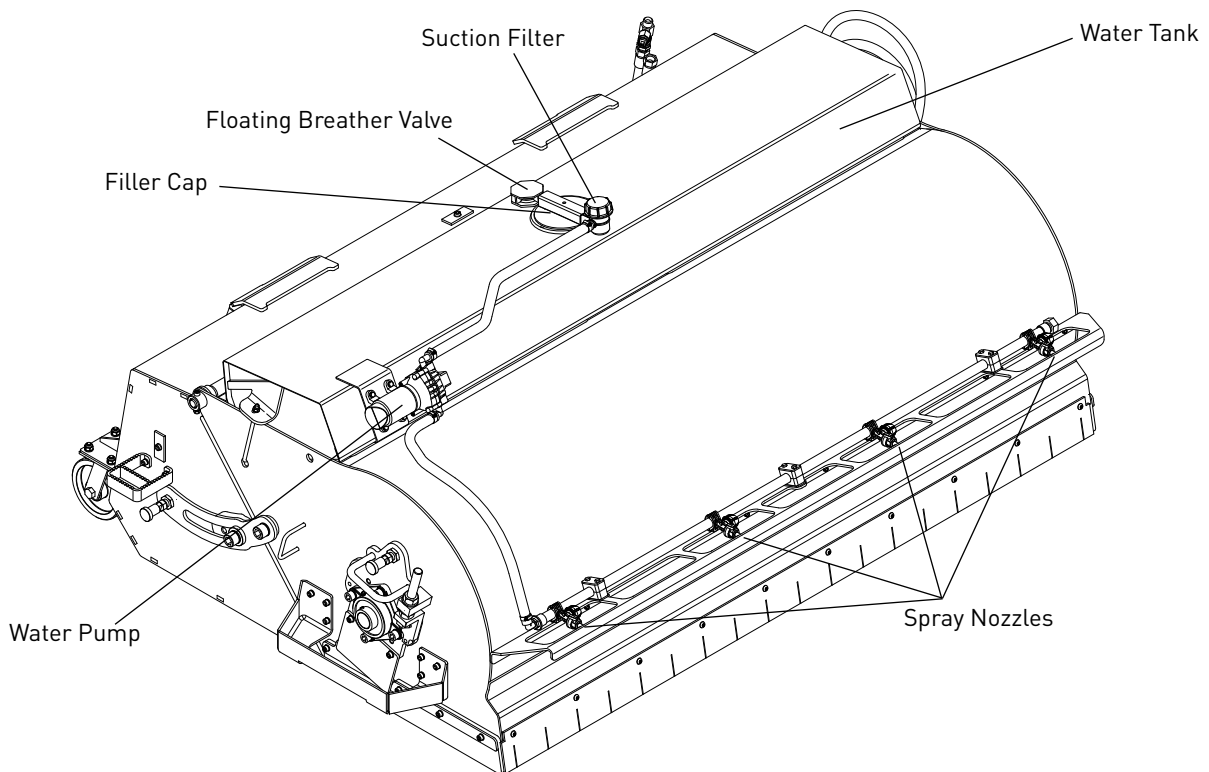
- Mount control box in a suitable position in the operators area so that the toggle switch is accessible.
- Route cable from pump along parent machine to the control box in the operator's area. Secure as necessary, ensure cable is free from moving parts.
- Connect the cable plug to the control box plug.
- Connect the control box to the parent machines auxiliary power supply.
- The water pump is switched on an off with the toggle switch on the control box.



WARNING: Do not run the pump without adequate water.

Water Tank

Fill water tank with clean fresh water do not use dirty water, salt water or chemicals. Dirty water can block the system and spray nozzels. Salt water and chemicals will corrode the system. Chemical can also be harmful to people , animals, plants and soil.



OPERATING PROCEDURE

Speeds

Vary brush, travel and engine speeds to match sweeping conditions.

Dirt and Gravel

To keep dust to a minimum try to plan sweeping for overcast or humid days or after it has rained.

Always try to use the sweeper with the wind at your back.

On hard surfaces a low brush speed and moderate travel speed required.

When sweeping gravel use just enough brush speed to roll the gravel not throw it.

Heavy Debris

A slow travel speed is required.

Sweep a path less than the full width of the sweeper.

Increased engine speed may be required if debris becomes very heavy.

During Use

Always carry the sweeper low to the ground to ensure good operator visibility.

Avoid excessive downward pressure on the brush and jockey wheels to prevent excessive wear.

Do not sweep hot material of any kind.

Emptying the bucket

Empty the bucket by raising the sweeper above the container, using the tilt controls to tilt the sweeper forwards the sweeper cover will open and the debris will be discharged.